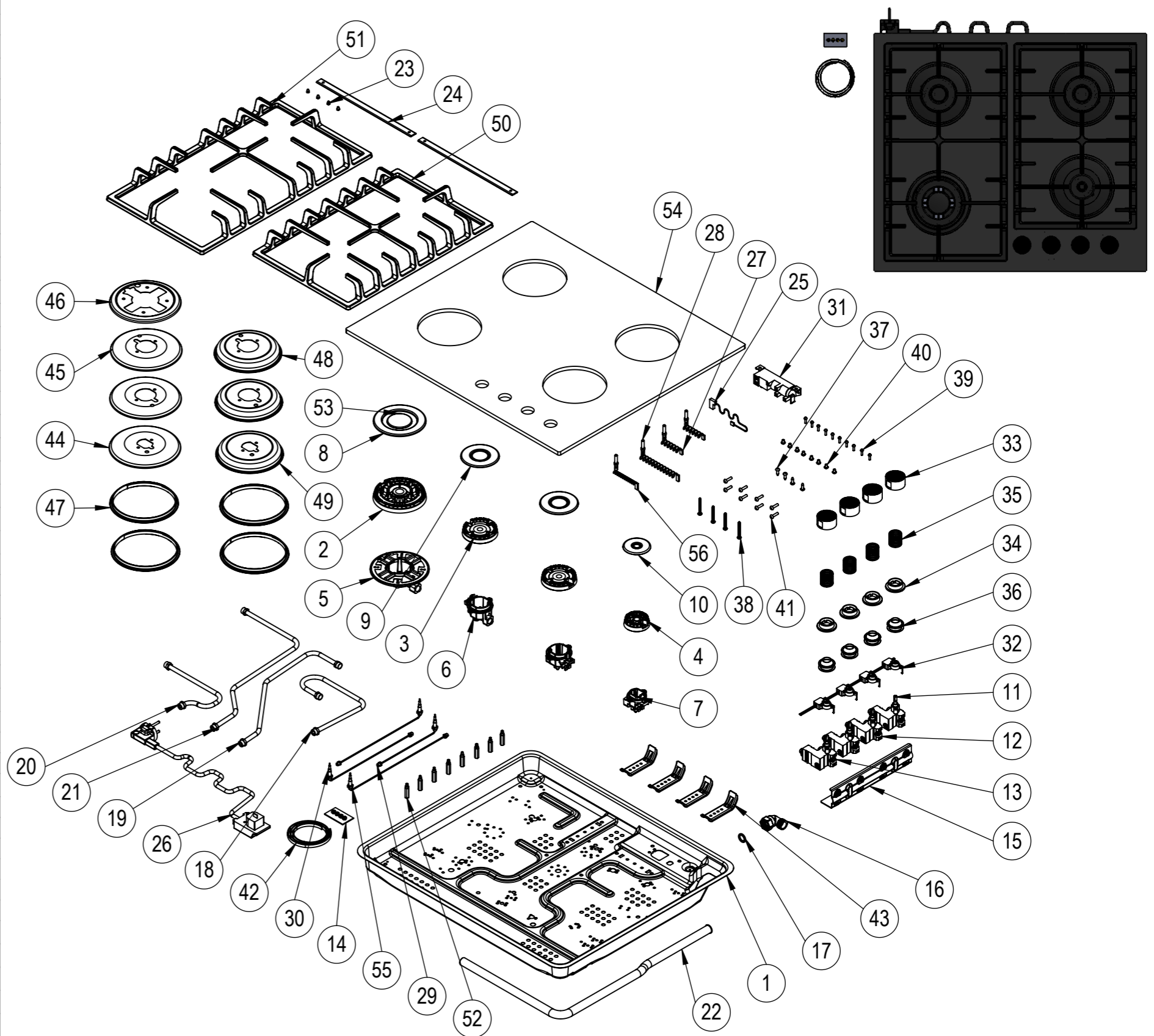
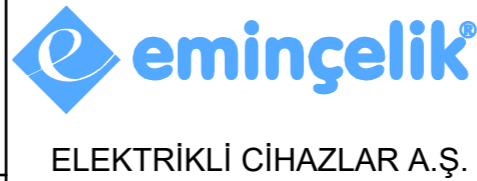


NU.	PART CODE	PART NAME	QTY.
1	151.01.02.005	Bottom Case	1
2	150.11.02.022	Small Wok Burner Head	1
3	150.11.02.020	Medium Burner Head	2
4	150.11.02.021	Small Burner Head	1
5	150.11.02.023	Small Wok Burner Base	1
6	150.11.02.027	Medium Burner Base	2
7	150.11.02.028	Small Burner Base	1
8	150.01.04.026	Small Wok Burner Outer Cap	1
9	150.01.04.008	Medium Burner Cap	2
10	150.01.04.009	Small Burner Cap	1
11	150.05.036	Gas Tap For NG 0,45	1
12	150.05.037	Gas Tap For NG 0,60	2
13	150.05.038	Gas Tap For NG 0,70	1
14	151.01.02.007	Injector Kit For LPG	1
15	151.01.02.019	Gas Tap Sheet	1
16	150.10.02.035	Gas Connection Elbow	1
17	150.14.008	Gasket	1
18	150.10.01.151	Gas Distribution Pipe	1
19	150.10.01.152	Gas Distribution Pipe	1
20	150.10.01.153	Gas Distribution Pipe	1
21	150.10.01.154	Gas Distribution Pipe	1
22	150.10.02.024	Main Gas Pipe	1
23	150.08.037	Pan Support Centering Pin	4
24	150.01.06.022	Pan Support Centering Stick	2
25	150.06.01.004	Neutral Cable 45cm	1
26	150.06.02.001	Power Cable 3x0,75	1
27	150.06.03.001	Sparking Electrode 260mm	2
28	150.06.03.002	Sparking Electrode 410mm	1
29	150.06.04.005	Thermocouple 290mm	1
30	150.06.04.006	Thermocouple 540mm	2
31	150.06.05.002	Ignition Unit	1
32	150.13.002	Micro Switch	1
33	150.03.01.050	Button	4
34	150.03.02.002	Button Plastic	4
35	150.05.019	Spring	4
36	150.14.014	Button Gasket	4
37	150.08.003	3.9x13 Screw	4
38	150.08.009	4.2x32mm Screw	4
39	150.08.011	M3x12 Screw	10
40	150.08.026	M4x6 Screw	8
41	150.08.053	M4x18 Screw	8
42	150.14.001	EPDM Tape	1
43	151.01.02.020	Mounting Sheet	4
44	151.01.04.046	Pan Support Plate	1
45	151.01.04.047	Pan Support Plate	2
46	151.01.04.050	Pan Support Plate	1
47	150.14.009	Oring	4
48	151.01.02.017	Medium Centering Plate	2
49	151.01.02.018	Small Centering Plate	1
50	150.04.01.037	Cast Iron Pan Support Right	1
51	150.04.01.038	Cast Iron Pan Support Left	1
52	150.11.01.004	M4x27 Pin	8
53	150.01.04.027	Small Wok Burner Inner Cap	1
54	150.02.01.02.220	Glass Tray	1
55	150.06.04.009	Thermocouple 2,5kW 550mm	1
56	150.06.03.007	Sparking Electrode 2,5kW 520mm	1



NOTES: -  
 -Unless otherwise specified dimensions are in millimeters.  
 -Do not scale drawing.  
 -Unspecified tolerances are 0,2 mm.



	NAME	DATE
DRAWN	İSMAİL ÖZEN	
CONTROL	TAYYAR ÇOBAN	
CONF.	TAYYAR ÇOBAN	
E-MAIL		
GROUND RAL:-		SERIGRAPHY RAL:-

MATERIAL:	PART CODE:34 235 DNG MNF	PART NAME:
DIMENSIONS:-	CUSTOMER CODE:EGHG.64.33CB/G	PRODUCT NAME:34 235 DNG MNF
		REV:1 1:9