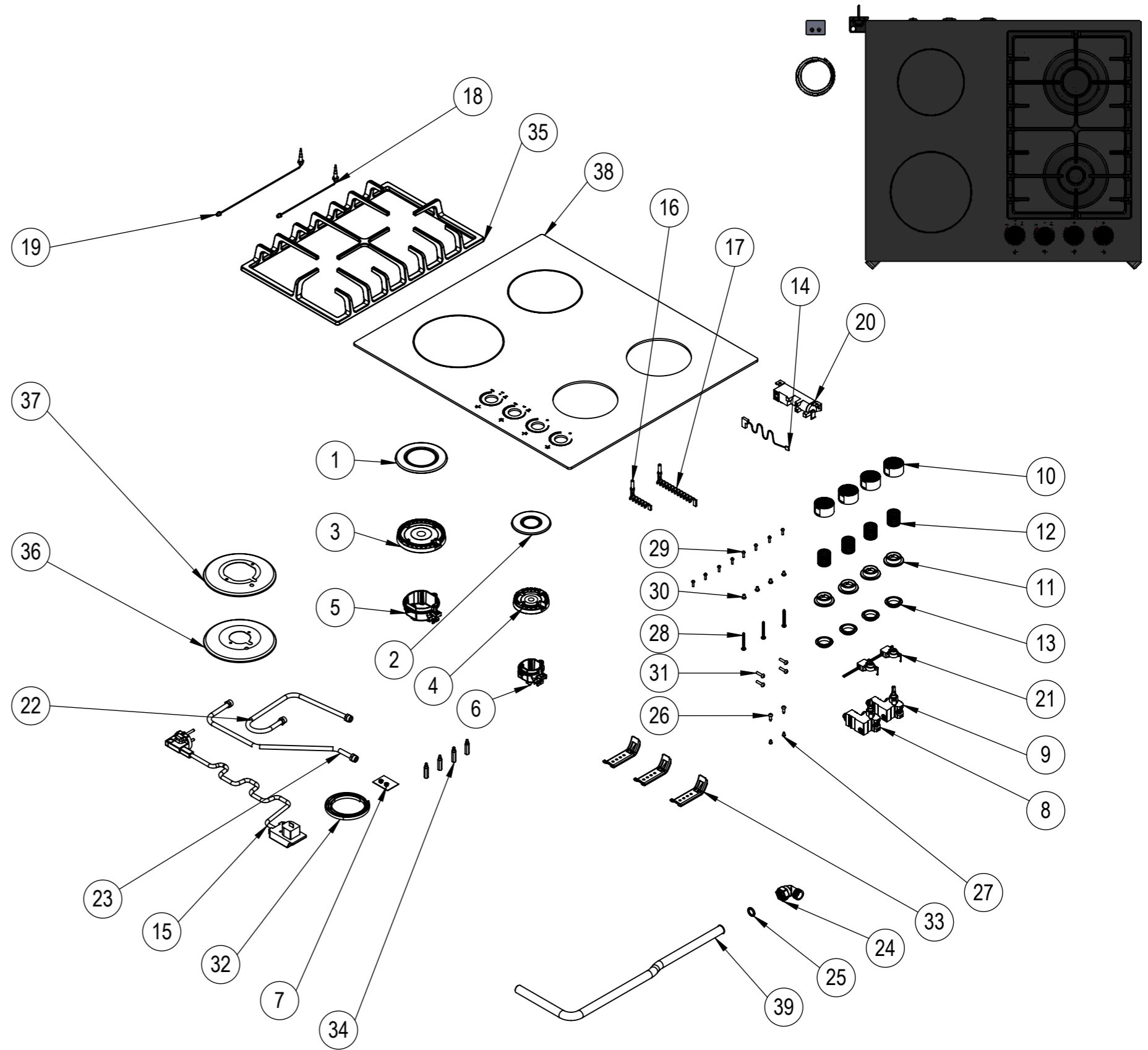


| NU. | PART CODE       | PART NAME                   | QTY. |
|-----|-----------------|-----------------------------|------|
| 1   | 150.01.04.007   | Big Burner Cap              | 1    |
| 2   | 150.01.04.008   | Medium Burner Cap           | 1    |
| 3   | 150.11.02.019   | Big Burner Head             | 1    |
| 4   | 150.11.02.020   | Medium Burner Head          | 1    |
| 5   | 150.11.02.026   | Big Burner Base             | 1    |
| 6   | 150.11.02.027   | Medium Burner Base          | 1    |
| 7   | 151.01.02.078   | Injector Kit For LPG        | 1    |
| 8   | 150.05.037      | Gas Tap For NG 0,60         | 1    |
| 9   | 150.05.038      | Gas Tap For NG 0,70         | 1    |
| 10  | 150.03.01.050   | Button                      | 4    |
| 11  | 150.03.02.002   | Button Plastic              | 4    |
| 12  | 150.05.019      | Spring                      | 4    |
| 13  | 150.14.006      | Button Gasket               | 4    |
| 14  | 150.06.01.003   | Neutral Cable 25cm          | 1    |
| 15  | 150.06.02.010   | Power Cable                 | 1    |
| 16  | 150.06.03.001   | Sparking Electrode 260mm    | 1    |
| 17  | 150.06.03.002   | Sparking Electrode 410mm    | 1    |
| 18  | 150.06.04.005   | Thermocouple 290mm          | 1    |
| 19  | 150.06.04.006   | Thermocouple 540mm          | 1    |
| 20  | 150.06.05.001   | Ignition Unit               | 1    |
| 21  | 150.13.014      | Micro Switch                | 1    |
| 22  | 150.10.01.151   | Gas Distribution Pipe       | 1    |
| 23  | 150.10.01.152   | Gas Distribution Pipe       | 1    |
| 24  | 150.10.02.035   | Gas Connection Elbow        | 1    |
| 25  | 150.14.008      | Gasket                      | 1    |
| 26  | 150.08.003      | 3.9x13 Screw                | 2    |
| 27  | 150.08.008      | 3.9x6.5 Screw               | 2    |
| 28  | 150.08.009      | 4.2x32mm Screw              | 3    |
| 29  | 150.08.011      | M3x12 Screw                 | 8    |
| 30  | 150.08.026      | M4x6 Screw                  | 4    |
| 31  | 150.08.053      | M4x18 Screw                 | 4    |
| 32  | 150.14.001      | EPDM Tape                   | 1    |
| 33  | 151.01.02.020   | Mounting Sheet              | 3    |
| 34  | 150.11.01.004   | M4x27 Pin                   | 4    |
| 35  | 150.04.01.037   | Cast Iron Pan Support Right | 1    |
| 36  | 151.01.04.047   | Pan Support Plate           | 1    |
| 37  | 151.01.04.048   | Pan Support Plate           | 1    |
| 38  | 15002.01.01.051 | Glass Tray                  | 1    |
| 39  | 150.10.02.047   | Main Gas Pipe               | 1    |



NOTES: -

-Unless otherwise specified dimensions are in milimeters.  
-Do not scale drawing.  
-Unspecified tolerances are 0,2 mm.

**eminçelik®**  
ELEKTRİKLİ CİHAZLAR A.Ş.

|              | NAME         | DATE             |
|--------------|--------------|------------------|
| DRAWN        | İSMAİL ÖZEN  |                  |
| CONTROL      | TAYYAR ÇOBAN |                  |
| CONF.        | TAYYAR ÇOBAN |                  |
| E-MAIL       |              |                  |
| GROUND RAL:- |              | SERIGRAPHY RAL:- |

|              |                                     |                             |
|--------------|-------------------------------------|-----------------------------|
| MATERIAL:    | PART CODE:34295 DNG MNF             | PART NAME:                  |
| DIMENSIONS:- | CUSTOMER CODE:EEHG.64.2HL.SZ.3CB/KG | PRODUCT NAME: 34295 DNG MNF |
|              |                                     | REV:1 1:9                   |