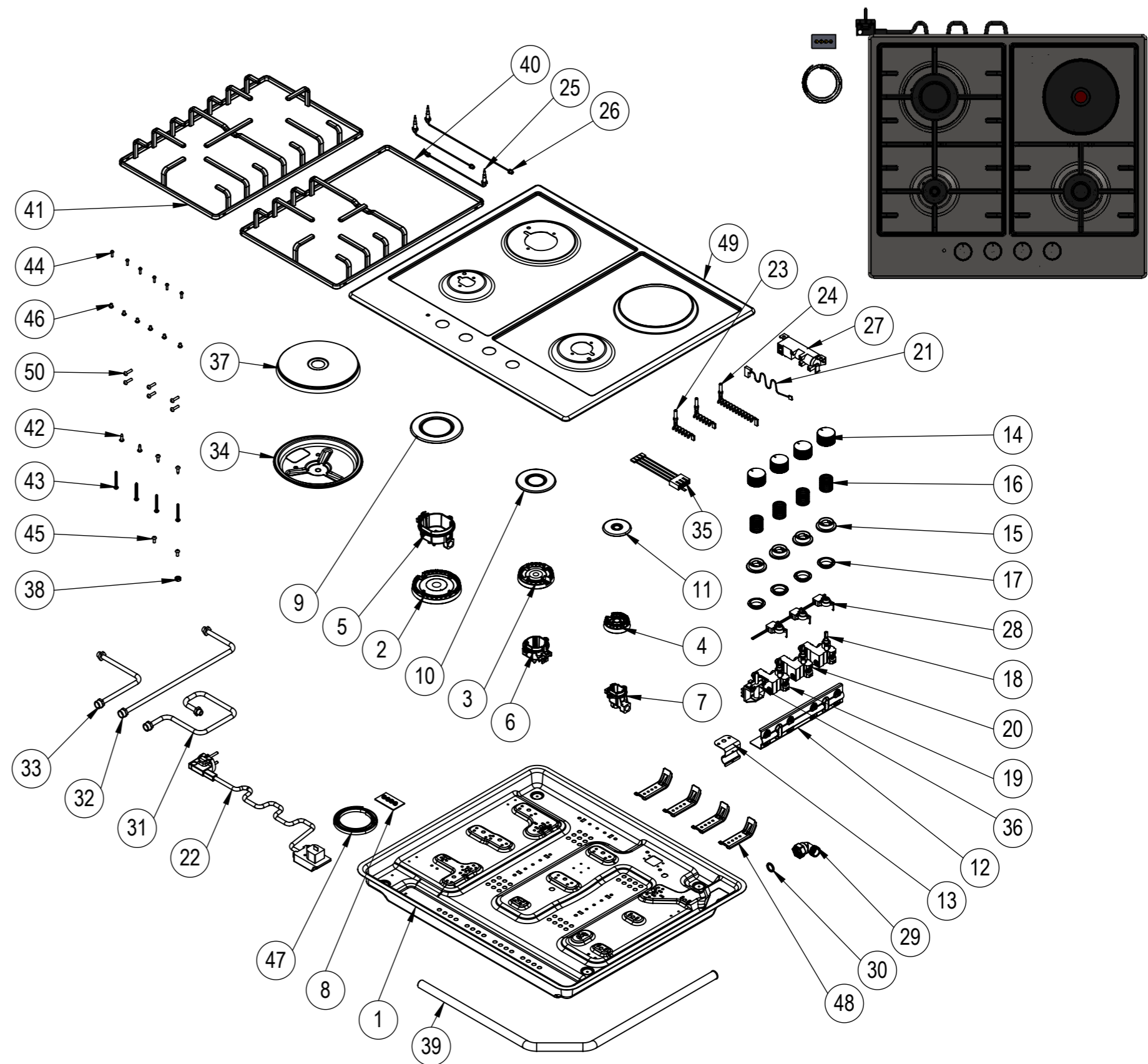


NU.	PART CODE	PART NAME	QTY.
1	151.01.02.006	Bottom Case	1
2	150.11.02.019	Big Burner Head	1
3	150.11.02.020	Medium Burner Head	1
4	150.11.02.021	Small Burner Head	1
5	150.11.02.026	Big Burner Base	1
6	150.11.02.027	Medium Burner Base	1
7	150.11.02.028	Small Burner Base	1
8	151.01.02.007	Injector Kit For LPG	1
9	150.01.04.007	Big Burner Cap	1
10	150.01.04.008	Medium Burner Cap	1
11	150.01.04.009	Small Burner Cap	1
12	151.01.02.019	Gas Tap Sheet	1
13	151.01.02.096	Heat Switch Sheet	1
14	150.03.01.061	Button	4
15	150.03.02.002	Button Plastic	4
16	150.05.019	Spring	4
17	150.14.006	Button Gasket	4
18	150.05.036	Gas Tap For NG 0,45	1
19	150.05.037	Gas Tap For NG 0,60	1
20	150.05.038	Gas Tap For NG 0,70	1
21	150.06.01.003	Neutral Cable 25cm	1
22	150.06.02.001	Power Cable 3x0,75	1
23	150.06.03.001	Sparking Electrode 260mm	2
24	150.06.03.002	Sparking Electrode 410mm	1
25	150.06.04.005	Thermocouple 290mm	2
26	150.06.04.006	Thermocouple 540mm	1
27	150.06.05.006	Ignition Unit	1
28	150.13.016	Micro Switch	1
29	150.10.02.035	Gas Connection Elbow	1
30	150.14.008	Gasket	1
31	150.10.01.069	Gas Distribution Pipe	1
32	150.10.01.070	Gas Distribution Pipe	1
33	150.10.01.173	Gas Distribution Pipe	1
34	150.01.03.032	Hot Plate Security Sheet	1
35	150.06.01.001	Hot Plate Cable	1
36	150.06.06.005	Heat Switch	1
37	150.07.001	1500W Hot Plate	1
38	150.08.028	M6 Nut	1
39	150.10.02.023	Main Gas Pipe	1
40	150.04.02.085	Pan Support Right	1
41	150.04.02.067	Pan Support Left	1
42	150.08.003	3.9x13 Screw	4
43	150.08.009	4.2x32mm Screw	4
44	150.08.011	M3x12 Screw	6
45	150.08.016	M4x10 Screw	2
46	150.08.026	M4x6 Screw	6
47	150.14.001	EPDM Tape	1
48	151.01.02.020	Mounting Sheet	4
49	151.01.01.050	Inox Table	1
50	150.08.053	M4x18 Screw	6



NOTES: -

-Unless otherwise specified dimensions are in milimeters.
-Do not scale drawing.
-Unspecified tolerances are 0,2 mm.



ELEKTRİKLİ CİHAZLAR A.Ş.

	NAME	DATE
DRAWN	TAYYAR ÇOBAN	
CONTROL	TAYYAR ÇOBAN	
CONF.	TAYYAR ÇOBAN	
E-MAIL		
GROUND RAL:-		SERIGRAPHY RAL:-

MATERIAL:	PART CODE:35210 NG MNF	PART NAME:	
DIMENSIONS:-	CUSTOMER CODE:EEHS.64.3CS/KG	PRODUCT NAME: 35210 NG MNF	REV:1 1:9