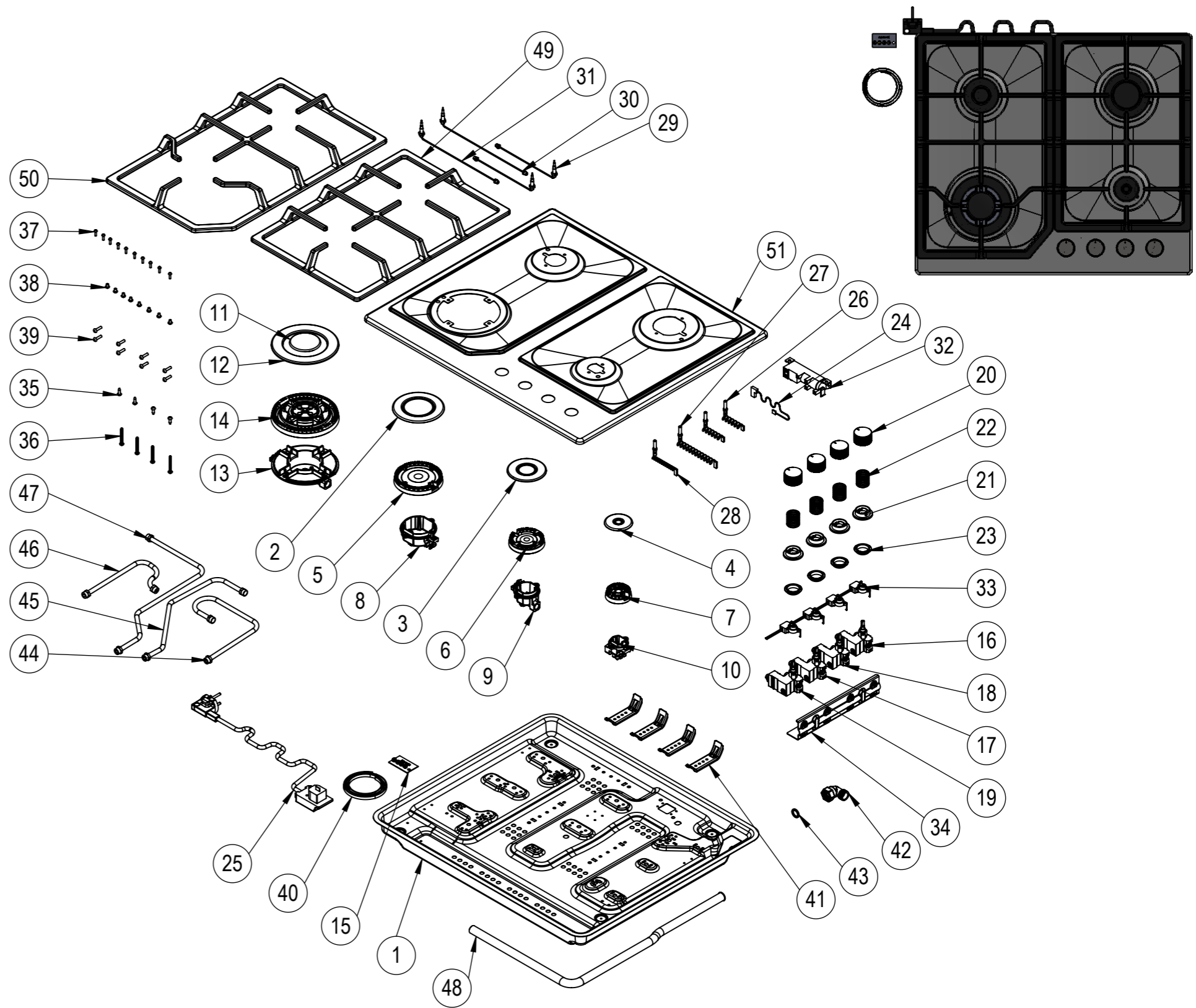


NU.	PART CODE	PART NAME	QTY.
1	151.01.02.006	Bottom Case	1
2	150.01.04.007	Big Burner Cap	1
3	150.01.04.008	Medium Burner Cap	1
4	150.01.04.009	Small Burner Cap	1
5	150.11.02.019	Big Burner Head	1
6	150.11.02.020	Medium Burner Head	1
7	150.11.02.021	Small Burner Head	1
8	150.11.02.026	Big Burner Base	1
9	150.11.02.027	Medium Burner Base	1
10	150.11.02.028	Small Burner Base	1
11	150.01.04.030	Big Wok Burner Inner Cap	1
12	150.01.04.031	Big Wok Burner Outer Cap	1
13	150.11.02.35	Big Wok Burner Base	1
14	150.11.02.037	Big Wok Burner Head	1
15	151.01.02.084	Injector Kit For LPG	1
16	150.05.036	Gas Tap For NG 0,45	1
17	150.05.037	Gas Tap For NG 0,60	1
18	150.05.038	Gas Tap For NG 0,70	1
19	150.05.041	Gas Tap For NG 0,86	1
20	150.03.01.062	Button	4
21	150.03.02.002	Button Plastic	4
22	150.05.019	Spring	4
23	150.14.006	Button Gasket	4
24	150.06.01.004	Neutral Cable 45cm	1
25	150.06.02.001	Power Cable 3x0,75	1
26	150.06.03.001	Sparking Electrode 260mm	2
27	150.06.03.002	Sparking Electrode 410mm	1
28	150.06.03.006	Sparking Electrode 3,8kW 400mm	1
29	150.06.04.005	Thermocouple 290mm	2
30	150.06.04.006	Thermocouple 540mm	1
31	150.06.04.007	Thermocouple 3,8kW 470mm	1
32	150.06.05.002	Ignition Unit	1
33	150.13.002	Micro Switch	1
34	151.01.02.019	Gas Tap Sheet	1
35	150.08.003	3.9x13 Screw	4
36	150.08.009	4.2x32mm Screw	4
37	150.08.011	M3x12 Screw	10
38	150.08.026	M4x6 Screw	8
39	150.08.053	M4x18 Screw	8
40	150.14.001	EPDM Tape	1
41	151.01.02.020	Mounting Sheet	4
42	150.10.02.035	Gas Connection Elbow	1
43	150.14.008	Gasket	1
44	150.10.01.151	Gas Distribution Pipe	1
45	150.10.01.152	Gas Distribution Pipe	1
46	150.10.01.153	Gas Distribution Pipe	1
47	150.10.01.154	Gas Distribution Pipe	1
48	150.10.02.024	Main Gas Pipe	1
49	150.04.01.065	Cast Iron Pan Support Right	1
50	150.04.01.066	Cast Iron Pan Support Left	1
51	151.01.01.372	Top Table	1



NOTES: -



ELEKTRİKLİ CİHAZLAR A.Ş.

-Unless otherwise specified dimensions are in millimeters.  
-Do not scale drawing.  
-Unspecified tolerances are 0,2 mm.

	NAME	DATE
DRAWN	İSMAİL ÖZEN	
CONTROL	TAYYAR ÇOBAN	
CONF.	TAYYAR ÇOBAN	
E-MAIL		
GROUND RAL:-		SERIGRAPHY RAL:-

MATERIAL:	PART CODE:39 531 DNG MNF	PART NAME:
DIMENSIONS:-	CUSTOMER CODE:EGHE.64.43CW/G	PRODUCT NAME:39 531 DNG MNF
		REV:1 1:9