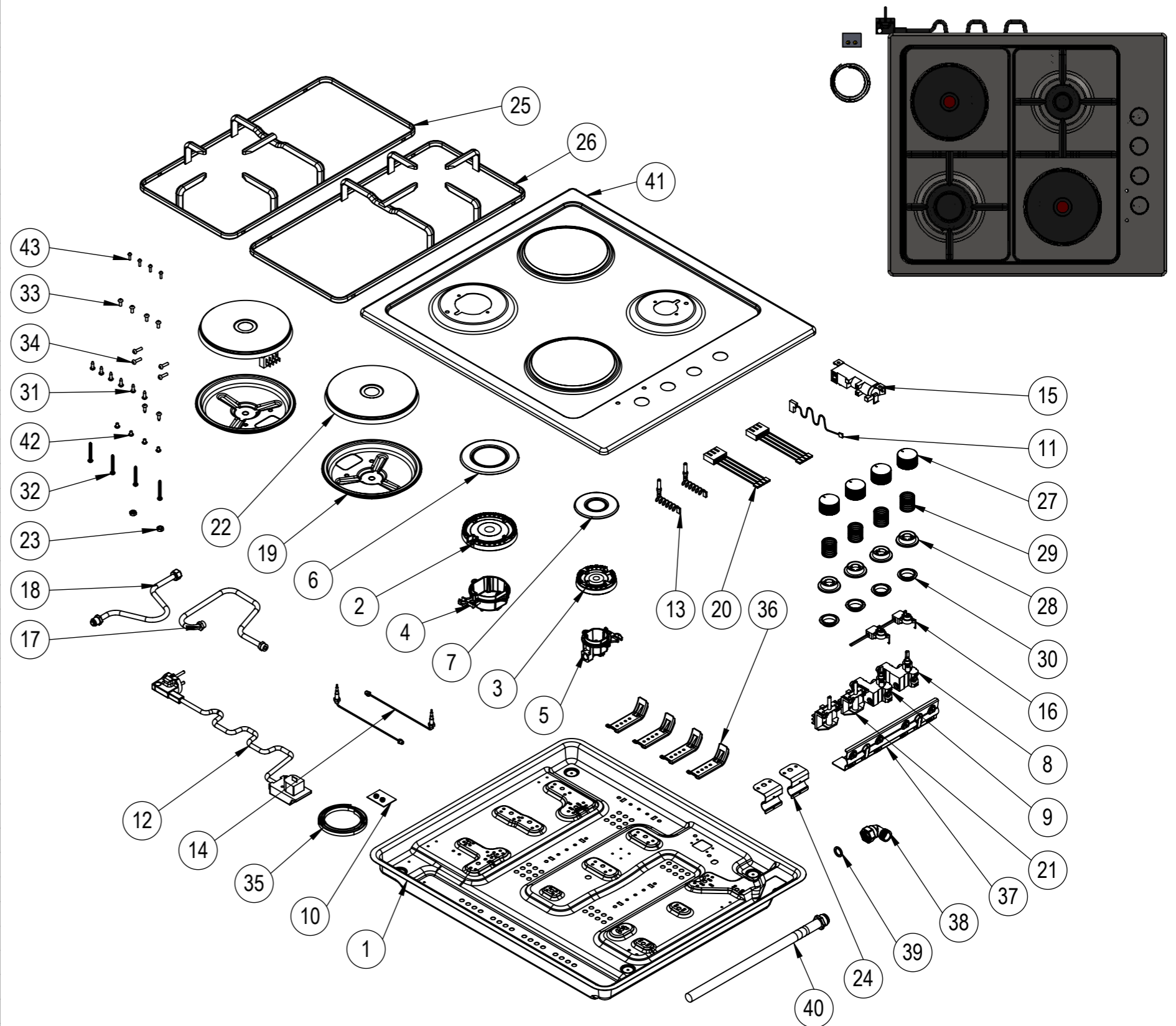


NU.	PART CODE	PART NAME	QTY.
1	151.01.02.006	Bottom Case	1
2	150.11.02.019	Big Burner Head	1
3	150.11.02.020	Medium Burner Head	1
4	150.11.02.026	Big Burner Base	1
5	150.11.02.027	Medium Burner Base	1
6	150.01.04.007	Big Burner Cap	1
7	150.01.04.008	Medium Burner Cap	1
8	150.05.037	Gas Tap For NG 0,60	1
9	150.05.038	Gas Tap For NG 0,70	1
10	151.01.02.078	Injector Kit For LPG	1
11	150.06.01.003	Neutral Cable 25cm	1
12	150.06.02.010	Power Cable	1
13	150.06.03.001	Sparking Electrode 260mm	2
14	150.06.04.005	Thermocouple 290mm	2
15	150.06.05.001	Ignition Unit	1
16	150.13.014	Micro Switch	1
17	150.10.01.047	Gas Distribution Pipe	1
18	150.10.01.051	Gas Distribution Pipe	1
19	150.01.03.032	Hot Plate Security Sheet	2
20	150.06.01.002	Hot Plate Cable	2
21	150.06.06.005	Heat Switch	2
22	150.07.001	1500W Hot Plate	2
23	150.08.028	M6 Nut	2
24	151.01.02.096	Heat Switch Sheet	2
25	150.04.02.021	Pan Support	1
26	150.04.02.083	Pan Support	1
27	150.03.01.061	Button	4
28	150.03.02.002	Button Plastic	4
29	150.05.019	Spring	4
30	150.14.006	Button Gasket	4
31	150.08.003	3.9x13 Screw	8
32	150.08.009	4.2x32mm Screw	4
33	150.08.016	M4x10 Screw	4
34	150.08.053	M4x18 Screw	4
35	150.14.001	EPDM Tape	1
36	151.01.02.020	Mounting Sheet	4
37	151.01.02.015	Gas Tap Sheet	1
38	150.10.02.035	Gas Connection Elbow	1
39	150.14.008	Gasket	1
40	150.10.02.021	Main Gas Pipe	1
41	151.01.01.379	Inox Table	1
42	150.08.026	M4x6 Screw	4
43	150.08.011	M3x12 Screw	4



NOTES: -

-Unless otherwise specified dimensions are in milimeters.  
-Do not scale drawing.  
-Unspecified tolerances are 0,2 mm.



ELEKTRİKLİ CİHAZLAR A.Ş.

	NAME	DATE
DRAWN	İSMAİL ÖZEN	
CONTROL	TAYYAR ÇOBAN	
CONF.	TAYYAR ÇOBAN	
E-MAIL		
GROUND RAL:-		SERIGRAPHY RAL:-

MATERIAL:	PART CODE:38 240 NG MNF	PART NAME:	
DIMENSIONS:-	CUSTOMER CODE:EEHS.64.5ES/KG	PRODUCT NAME:38 240 NG MNF	REV:1 1:8