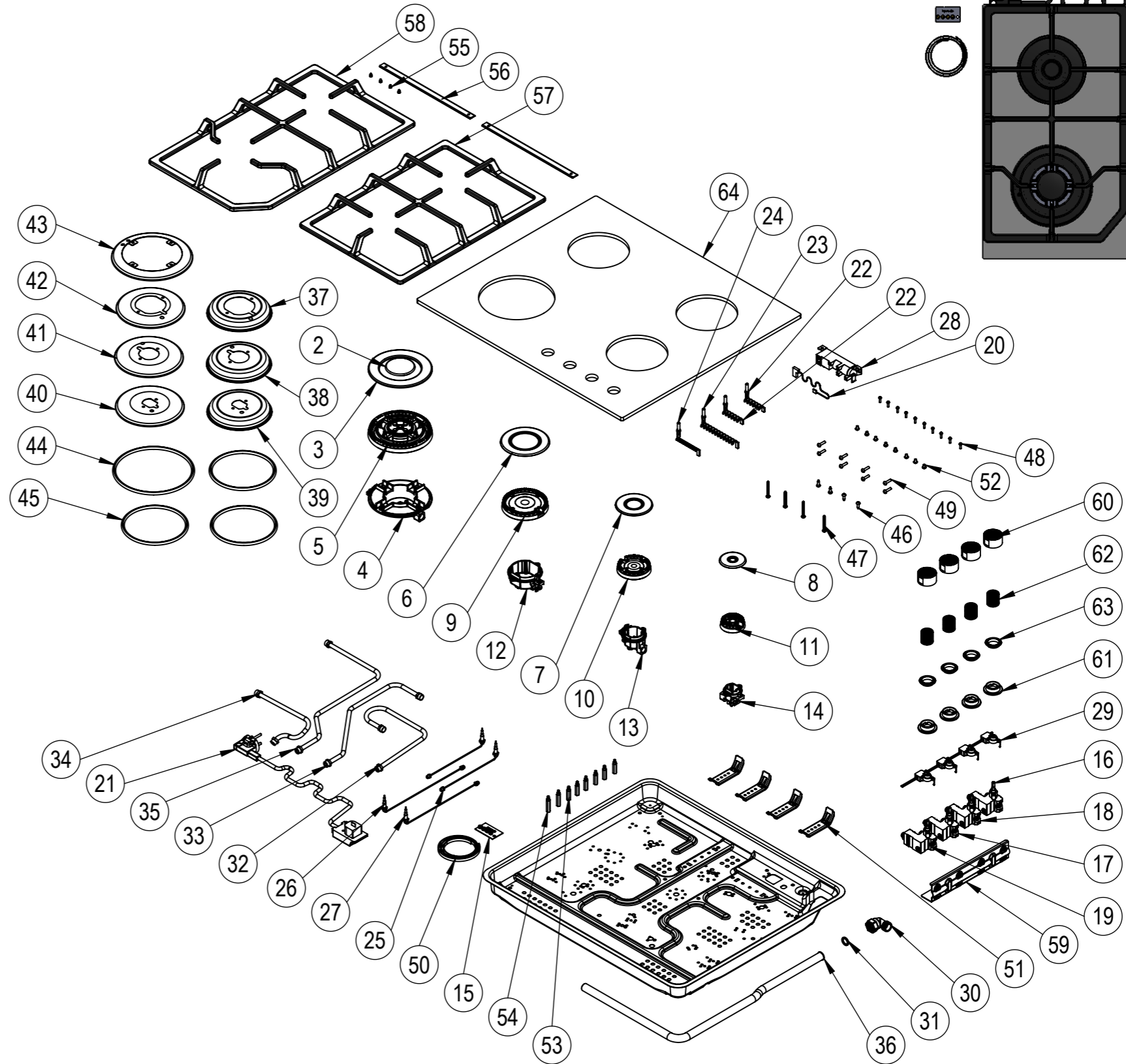
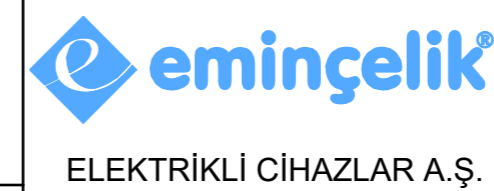


NU.	PART CODE	PART NAME	QTY.
1	151.01.02.005	Bottom Case	1
2	150.01.04.030	Big Wok Burner Inner Cap	1
3	150.01.04.031	Big Wok Burner Outer Cap	1
4	150.11.02.35	Big Wok Burner Base	1
5	150.11.02.037	Big Wok Burner Head	1
6	150.01.04.007	Big Burner Cap	1
7	150.01.04.008	Medium Burner Cap	1
8	150.01.04.009	Small Burner Cap	1
9	150.11.02.019	Big Burner Head	1
10	150.11.02.020	Medium Burner Head	1
11	150.11.02.021	Small Burner Head	1
12	150.11.02.026	Big Burner Base	1
13	150.11.02.027	Medium Burner Base	1
14	150.11.02.028	Small Burner Base	1
15	151.01.02.084	Injector Kit For LPG	1
16	150.05.036	Gas Tap For NG 0,45	1
17	150.05.037	Gas Tap For NG 0,60	1
18	150.05.038	Gas Tap For NG 0,70	1
19	150.05.041	Gas Tap For NG 0,86	1
20	150.06.01.004	Neutral Cable	1
21	1150.06.02.001	Power Cable	1
22	150.06.03.001	Sparking Electrode	2
23	150.06.03.002	Sparking Electrode	1
24	150.06.03.006	Sparking Electrode	1
25	150.06.04.005	Thermocouple	2
26	150.06.04.006	Thermocouple	1
27	150.06.04.007	Thermocouple	1
28	150.06.05.002	Ignition Unit	1
29	150.13.002	Micro Switch	1
30	150.10.02.035	Gas Connection Elbow	1
31	150.14.008	Gasket	1
32	150.10.01.151	Gas Distribution Pipe	1
33	150.10.01.152	Gas Distribution Pipe	1
34	150.10.01.153	Gas Distribution Pipe	1
35	150.10.01.154	Gas Distribution Pipe	1
36	150.10.02.024	Main Gas Pipe	1
37	151.01.02.016	Big Centering Plate	1
38	151.01.02.017	Medium Centering Plate	1
39	151.01.02.018	Small Centering Plate	1
40	151.01.04.046	Pan Support Plate	1
41	151.01.04.047	Pan Support Plate	1
42	151.01.04.048	Pan Support Plate	1
43	151.01.04.049	Pan Support Plate	1
44	150.14.022	Oring	1
45	150.14.023	Oring	3
46	150.08.003	3.9x13 Screw	4
47	150.08.009	4.2x32mm Screw	4
48	150.08.011	M3x12	10
49	150.08.053	M4x18	8
50	150.14.001	EPDM Tape	1
51	151.01.02.020	Mounting Sheet	4
52	150.08.026	M4x6	8
53	150.11.01.004	M4x27 Pin	6
54	150.11.01.009	M4x33 Pin	2
55	150.08.037	Pan Support Centering Pin	4
56	150.01.06.022	Pan Support Centering Stick	2
57	150.04.01.065	Cast Iron Pan Support Right	1
58	150.04.01.066	Cast Iron Pan Support Left	1
59	151.01.02.019	Gas Tap Sheet	1
60	150.03.01.050	Button	4
61	150.03.02.002	Button Plastic	4
62	150.05.019	Spring	4
63	150.14.006	Button Gasket	4
64	150.02.01.02.265	Glass Tray	1



NOTES: -
 -Unless otherwise specified dimensions are in millimeters.
 -Do not scale drawing.
 -Unspecified tolerances are 0,2 mm.



	NAME	DATE
DRAWN	İSMAIL ÖZEN	
CONTROL	TAYYAR ÇOBAN	
CONF.	TAYYAR ÇOBAN	
E-MAIL		
GROUND RAL:-		SERIGRAPHY RAL:-

MATERIAL:	PART CODE:39 536 DNG MNF	PART NAME:	
DIMENSIONS:-	CUSTOMER CODE:EGHG.64.43CW/G	PRODUCT NAME:39 536 DNG MNF	REV:1 1:10