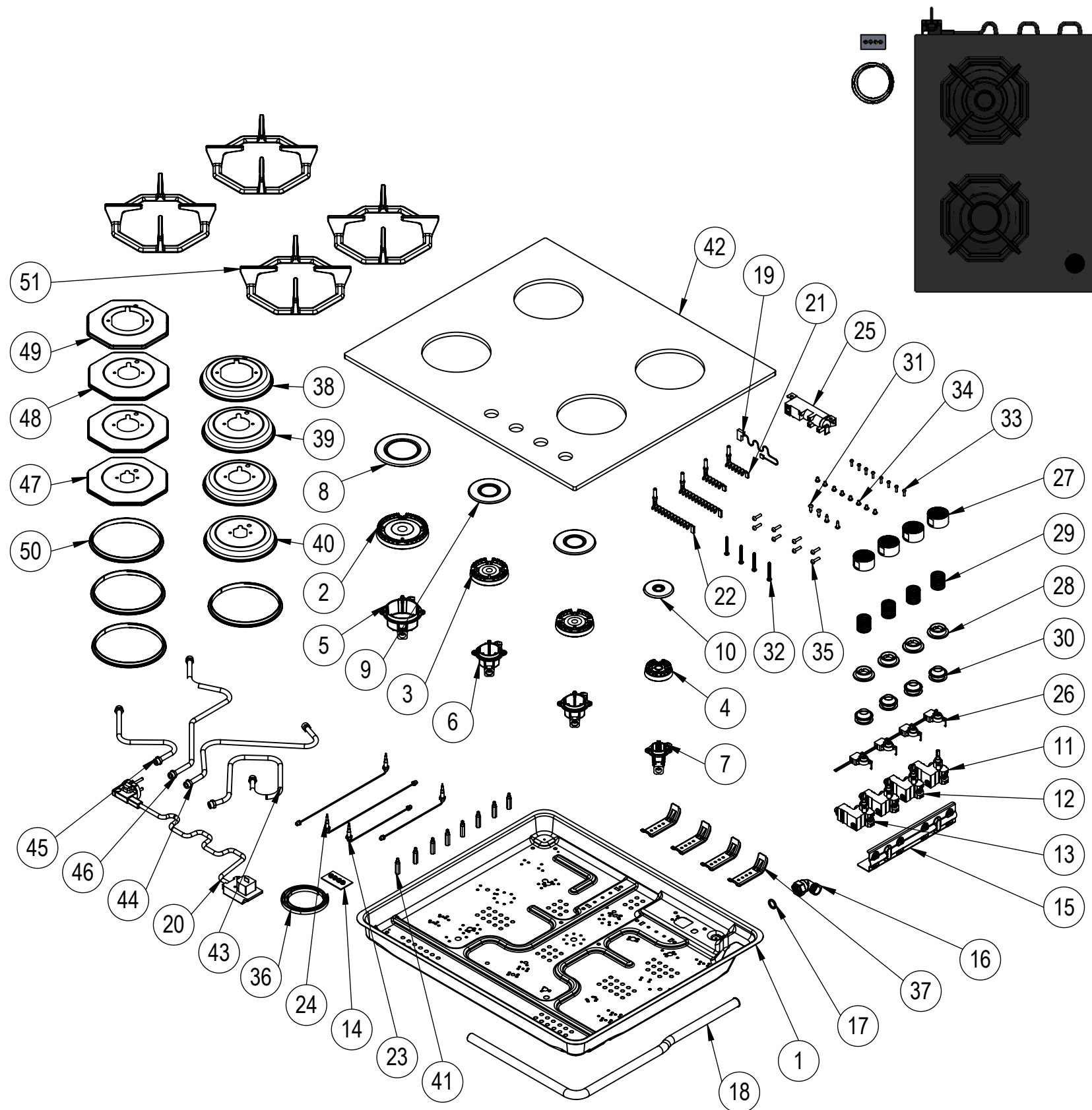


| NU. | PART CODE | PART NAME | QTY. |
|-----|------------------|--------------------------|------|
| 1 | 151.01.02.005 | Bottom Case | 1 |
| 2 | 150.11.02.019 | Big Burner Head | 1 |
| 3 | 150.11.02.020 | Medium Burner Head | 2 |
| 4 | 150.11.02.021 | Small Burner Head | 1 |
| 5 | 150.11.02.026 | Big Burner Base | 1 |
| 6 | 150.11.02.027 | Medium Burner Base | 2 |
| 7 | 150.11.02.028 | Small Burner Base | 1 |
| 8 | 150.01.04.007 | Big Burner Cap | 1 |
| 9 | 150.01.04.008 | Medium Burner Cap | 2 |
| 10 | 150.01.04.009 | Small Burner Cap | 1 |
| 11 | 150.05.036 | Gas Tap For NG 0,45 | 1 |
| 12 | 150.05.037 | Gas Tap For NG 0,60 | 2 |
| 13 | 150.05.038 | Gas Tap For NG 0,70 | 1 |
| 14 | 151.01.02.007 | Injector Kit For LPG | 1 |
| 15 | 151.01.02.019 | Gas Tap Sheet | 1 |
| 16 | 150.10.02.035 | Gas Connection Elbow | 1 |
| 17 | 150.14.008 | Gasket | 1 |
| 18 | 150.10.02.024 | Main Gas Pipe | 1 |
| 19 | 150.06.01.004 | Neutral Cable 45cm | 1 |
| 20 | 150.06.02.001 | Power Cable 3x0,75 | 1 |
| 21 | 150.06.03.001 | Sparking Electrode 260mm | 2 |
| 22 | 150.06.03.002 | Sparking Electrode 410mm | 2 |
| 23 | 150.06.04.005 | Thermocouple 290mm | 2 |
| 24 | 150.06.04.006 | Thermocouple 540mm | 2 |
| 25 | 150.06.05.002 | Ignition Unit | 1 |
| 26 | 150.13.002 | Micro Switch | 1 |
| 27 | 150.03.01.050 | Button | 4 |
| 28 | 150.03.02.002 | Button Plastic | 4 |
| 29 | 150.05.019 | Spring | 4 |
| 30 | 150.14.014 | Button Gasket | 4 |
| 31 | 150.08.003 | 3.9x13 Screw | 4 |
| 32 | 150.08.009 | 4.2x32mm Screw | 4 |
| 33 | 150.08.011 | M3x12 Screw | 8 |
| 34 | 150.08.026 | M4x6 Screw | 8 |
| 35 | 150.08.053 | M4x18 Screw | 8 |
| 36 | 150.14.001 | EPDM Tape | 1 |
| 37 | 151.01.02.020 | Mounting Sheet | 4 |
| 38 | 151.01.02.016 | Big Centering Plate | 1 |
| 39 | 151.01.02.017 | Medium Centering Plate | 2 |
| 40 | 151.01.02.018 | Small Centering Plate | 1 |
| 41 | 150.11.01.004 | M4x27 Pin | 8 |
| 42 | 150.02.01.02.220 | Glass Tray | 1 |
| 43 | 150.10.01.161 | Gas Distribution Pipe | 1 |
| 44 | 150.10.01.160 | Gas Distribution Pipe | 1 |
| 45 | 150.10.01.158 | Gas Distribution Pipe | 1 |
| 46 | 150.10.01.159 | Gas Distribution Pipe | 1 |
| 47 | 151.01.04.062 | Pan Support Plate | 1 |
| 48 | 151.01.04.063 | Pan Support Plate | 2 |
| 49 | 151.01.04.064 | Pan Support Plate | 1 |
| 50 | 150.14.009 | Oring | 4 |
| 51 | 151.04.01.043 | Cast Iron Pan Support | 4 |



NOTES: -

-Unless otherwise specified dimensions are in millimeters.
-Do not scale drawing.
-Unspecified tolerances are 0,2 mm.



ELEKTRİKLİ CİHAZLAR A.Ş.

| | NAME | DATE |
|--------------|--------------|------------------|
| DRAWN | İSMAİL ÖZEN | |
| CONTROL | TAYYAR ÇOBAN | |
| CONF. | TAYYAR ÇOBAN | |
| E-MAIL | | |
| GROUND RAL:- | | SERIGRAPHY RAL:- |

| | | |
|--------------|-----------------------------|-----------------------------|
| MATERIAL: | PART CODE:34 225 SNG MNF | PART NAME: |
| DIMENSIONS:- | CUSTOMER CODE:EGHG.64.2CB/G | PRODUCT NAME:34 225 SNG MNF |
| | | REV:1 1:9 |