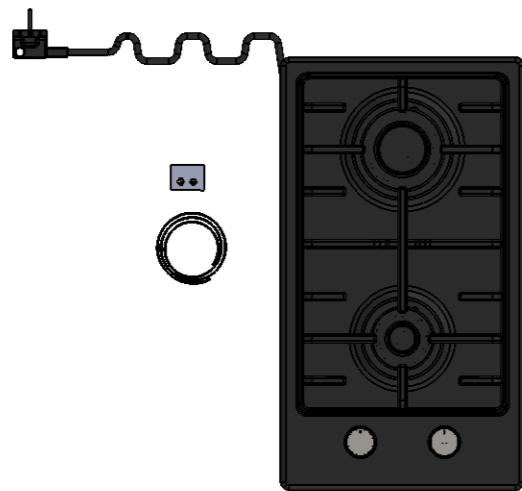
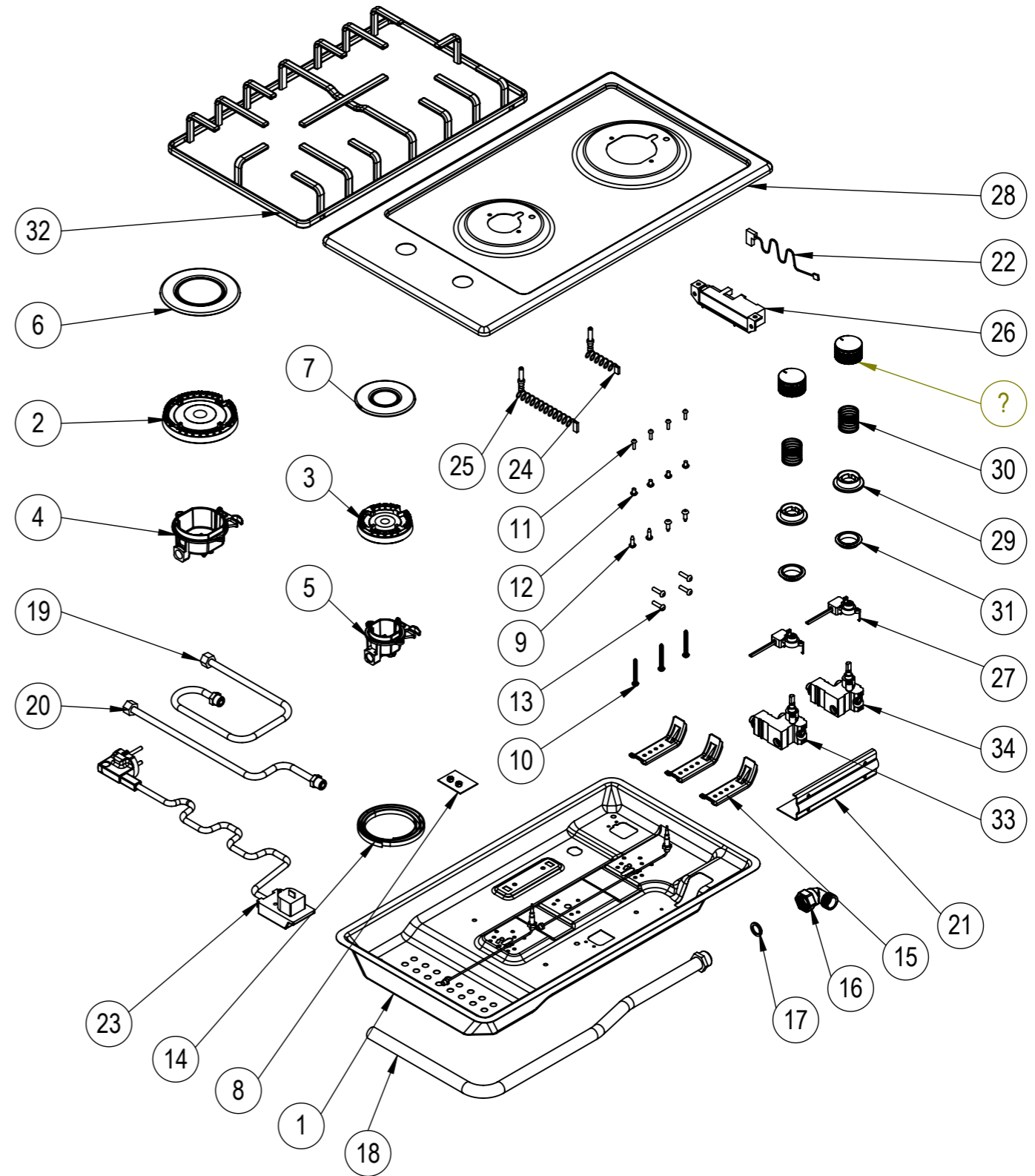


NU.	PART CODE	PART NAME	QTY.
1	151.01.02.011	Domino Bottom Case	1
2	150.11.02.019	Big Burner Head	1
3	150.11.02.020	Medium Burner Head	1
4	150.11.02.026	Big Burner Base	1
5	150.11.02.027	Medium Burner Base	1
6	150.01.04.007	Big Burner Cap	1
7	150.01.04.008	Medium Burner Cap	1
8	151.01.02.078	Injector Kit For LPG	1
9	150.08.003	3.9x13 Screw	4
10	150.08.009	4.2x32mm Screw	3
11	150.08.011	M3x12 Screw	4
12	150.08.026	M4x6 Screw	4
13	150.08.053	M4x18 Screw	4
14	150.14.001	EPDM Tape	1
15	151.01.02.020	Mounting Sheet	3
16	150.10.02.035	Gas Connection Elbow	1
17	150.14.008	Gasket	1
18	150.10.02.017	Main Gas Pipe	1
19	150.10.01.126	Gas Distribution Pipe	1
20	150.10.01.127	Gas Distribution Pipe	1
21	151.01.02.070	Gas Tap Sheet	1
22	150.06.01.003	Neutral Cable 25cm	1
23	150.06.02.001	Power Cable 3x0,75	1
24	150.06.03.001	Sparking Electrode 260mm	1
25	150.06.03.002	Sparking Electrode 410mm	1
26	150.06.05.001	Ignition Unit	1
27	150.13.003	Micro Switch	1
28	151.01.01.294	Top Plate	1
29	150.03.02.002	Button Plastic	2
30	150.05.019	Spring	2
31	150.14.006	Button Gasket	2
32	150.04.02.086	Pan Support	1
33	150.05.037	Gas Tap For NG 0,60	1
34	150.05.038	Gas Tap For NG 0,70	1
35	150.03.01.061	Button	2
36	150.06.04.005	Thermocouple 290mm	1
37	150.06.04.006	Thermocouple 540mm	1



NOTES: -		NAME		DATE
-Unless otherwise specified dimensions are in milimeters. -Do not scale drawing. -Unspecified tolerances are 0,2 mm.		DRAWN	İSMAİL ÖZEN	
		CONTROL	TAYYAR ÇOBAN	
		CONF.	TAYYAR ÇOBAN	
		E-MAIL		
		GROUND RAL:-	SERIGRAPHY RAL:-	
MATERIAL:	PART CODE:41 222 NG MNF	PART NAME:		
DIMENSIONS:-	CUSTOMER CODE:EGHE.32.3EB/G	PRODUCT NAME: 41 222 NG MNF	REV:1	1:7

**eminçelik®**  
ELEKTRİKLİ CİHAZLAR A.Ş.