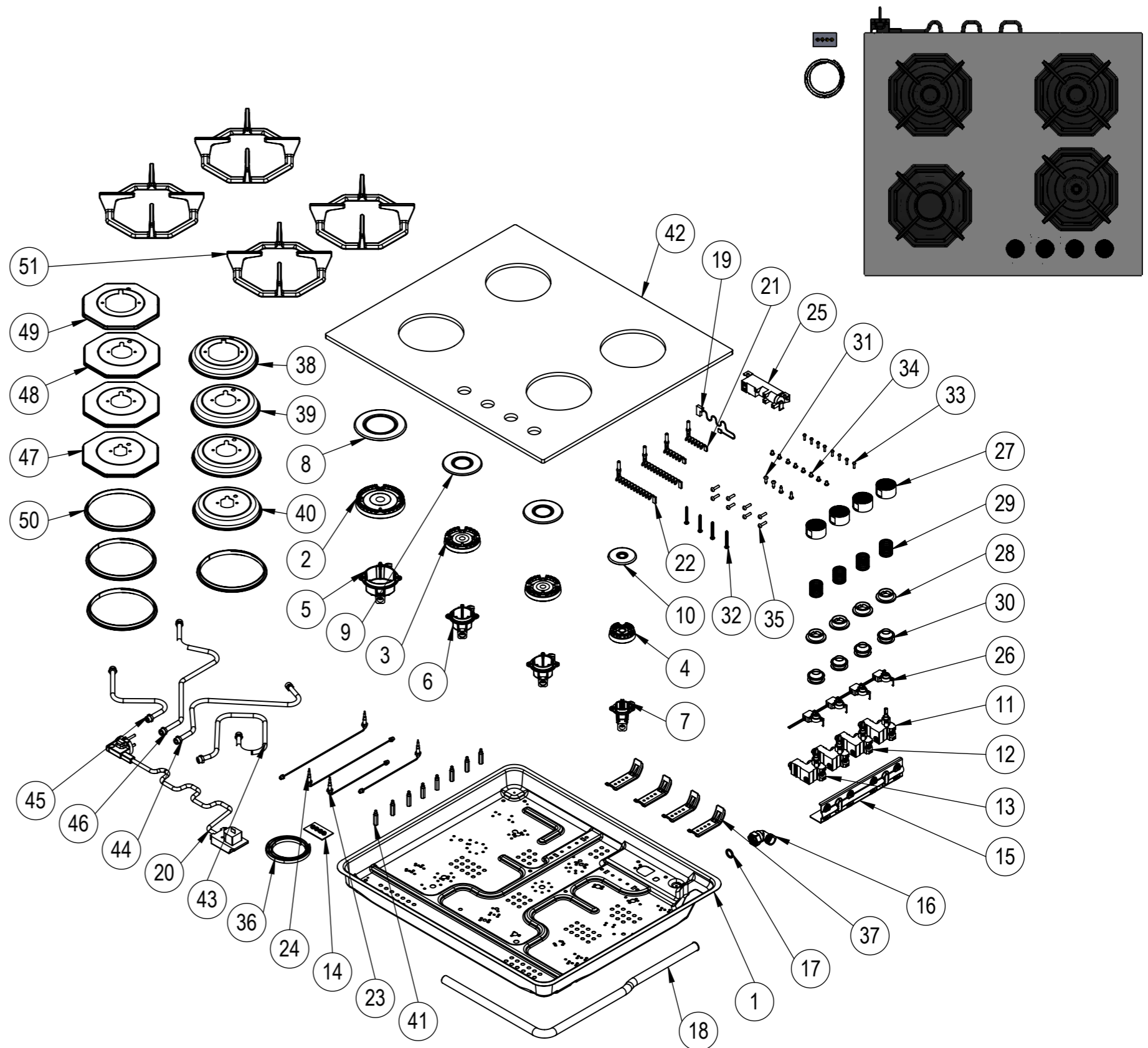


NU.	PART CODE	PART NAME	QTY.
1	151.01.02.005	Bottom Case	1
2	150.11.02.019	Big Burner Head	1
3	150.11.02.020	Medium Burner Head	2
4	150.11.02.021	Small Burner Head	1
5	150.11.02.026	Big Burner Base	1
6	150.11.02.027	Medium Burner Base	2
7	150.11.02.028	Small Burner Base	1
8	150.01.04.007	Big Burner Cap	1
9	150.01.04.008	Medium Burner Cap	2
10	150.01.04.009	Small Burner Cap	1
11	150.05.036	Gas Tap For NG 0,45	1
12	150.05.037	Gas Tap For NG 0,60	2
13	150.05.038	Gas Tap For NG 0,70	1
14	151.01.02.007	Injector Kit For LPG	1
15	151.01.02.019	Gas Tap Sheet	1
16	150.10.02.035	Gas Connection Elbow	1
17	150.14.008	Gasket	1
18	150.10.02.024	Main Gas Pipe	1
19	150.06.01.004	Neutral Cable 45cm	1
20	150.06.02.001	Power Cable 3x0,75	1
21	150.06.03.001	Sparking Electrode 260mm	2
22	150.06.03.002	Sparking Electrode 410mm	2
23	150.06.04.005	Thermocouple 290mm	2
24	150.06.04.006	Thermocouple 540mm	2
25	150.06.05.002	Ignition Unit	1
26	150.13.002	Micro Switch	1
27	150.03.01.050	Button	4
28	150.03.02.002	Button Plastic	4
29	150.05.019	Spring	4
30	150.14.014	Button Gasket	4
31	150.08.003	3.9x13 Screw	4
32	150.08.009	4.2x32mm Screw	4
33	150.08.011	M3x12 Screw	8
34	150.08.026	M4x6 Screw	8
35	150.08.053	M4x18 Screw	8
36	150.14.001	EPDM Tape	1
37	151.01.02.020	Mounting Sheet	4
38	151.01.02.016	Big Centering Plate	1
39	151.01.02.017	Medium Centering Plate	2
40	151.01.02.018	Small Centering Plate	1
41	150.11.01.004	M4x27 Pin	8
42	150.02.01.02.214	Glass Tray	1
43	150.10.01.161	Gas Distribution Pipe	1
44	150.10.01.160	Gas Distribution Pipe	1
45	150.10.01.158	Gas Distribution Pipe	1
46	150.10.01.159	Gas Distribution Pipe	1
47	151.01.04.062	Pan Support Plate	1
48	151.01.04.063	Pan Support Plate	2
49	151.01.04.064	Pan Support Plate	1
50	150.14.009	Oring	4
51	151.04.01.043	Cast Iron Pan Support	4



NOTES: -

-Unless otherwise specified dimensions are in millimeters.  
-Do not scale drawing.  
-Unspecified tolerances are 0,2 mm.



ELEKTRİKLİ CİHAZLAR A.Ş.

	NAME	DATE
DRAWN	İSMAİL ÖZEN	
CONTROL	TAYYAR ÇOBAN	
CONF.	TAYYAR ÇOBAN	
E-MAIL		
GROUND RAL:-		SERIGRAPHY RAL:-

MATERIAL:	PART CODE:34 226 SNG MNF	PART NAME:	
DIMENSIONS:-	CUSTOMER CODE:EGHG.64.2CW/G	PRODUCT NAME: 34 226 SNG MNF	REV:1 1:9