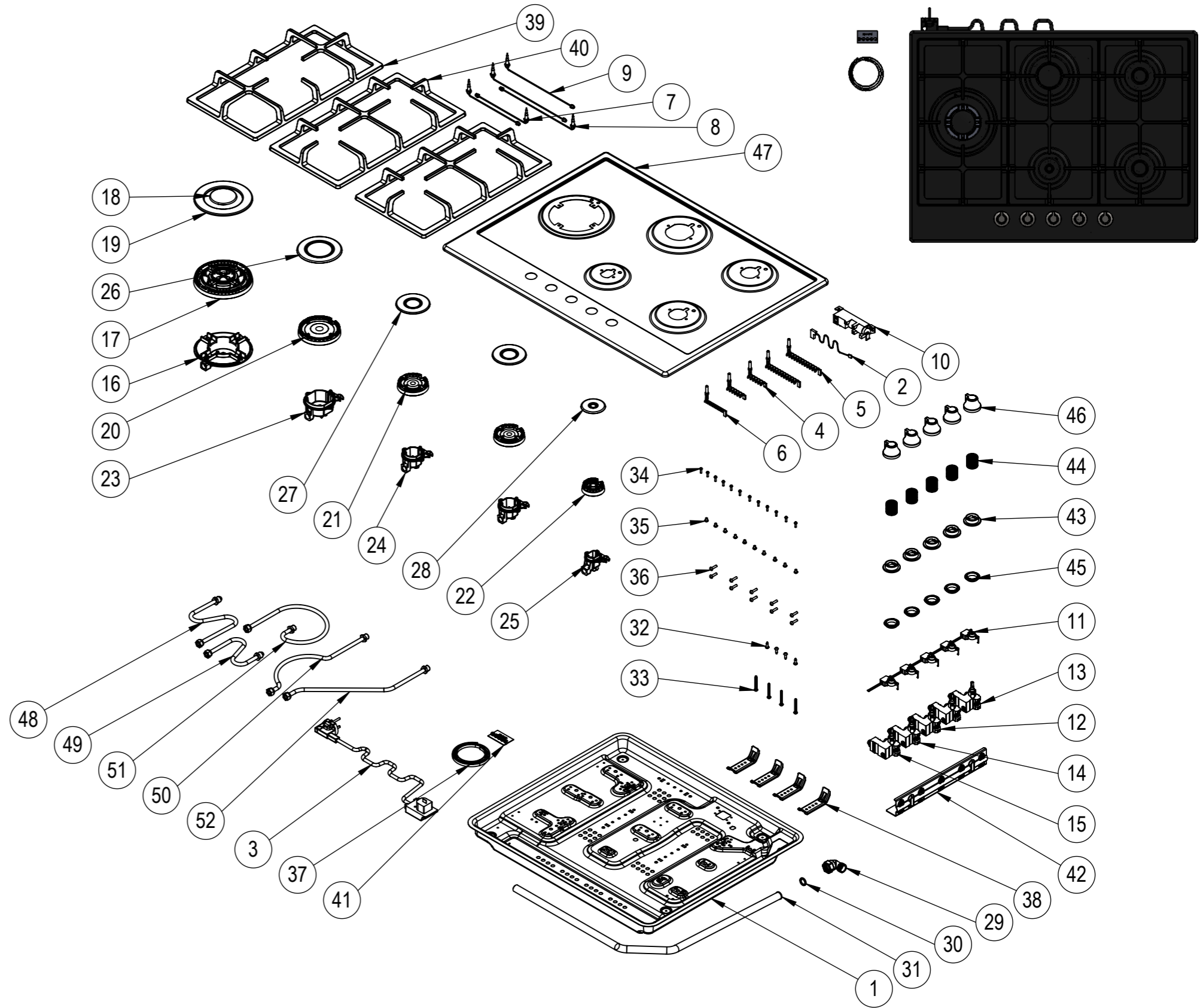



NU.	PART CODE	PART NAME	QTY.
1	151.01.02.006	Bottom Case	1
2	150.06.01.003	Neutral Cable 25cm	1
3	150.06.02.001	Power Cable 3x0,75	1
4	150.06.03.001	Sparking Electrode 260mm	2
5	150.06.03.002	Sparking Electrode 410mm	2
6	150.06.03.006	Sparking Electrode 3,8kW 400mm	1
7	150.06.04.005	Thermocouple 290mm	2
8	150.06.04.006	Thermocouple 540mm	2
9	150.06.04.007	Thermocouple 3,8kW 470mm	1
10	150.06.05.007	Ignition Unit	1
11	150.13.018	Micro Switch	1
12	150.05.036	Gas Tap For NG 0,45	1
13	150.05.037	Gas Tap For NG 0,60	2
14	150.05.038	Gas Tap For NG 0,70	1
15	150.05.041	Gas Tap For NG 0,86	1
16	150.11.02.35	Big Wok Burner Base	1
17	150.11.02.037	Big Wok Burner Head	1
18	150.01.04.030	Big Wok Burner Inner Cap	1
19	150.01.04.031	Big Wok Burner Outer Cap	1
20	150.11.02.019	Big Burner Head	1
21	150.11.02.020	Medium Burner Head	2
22	150.11.02.021	Small Burner Head	1
23	150.11.02.026	Big Burner Base	1
24	150.11.02.027	Medium Burner Base	2
25	150.11.02.028	Small Burner Base	1
26	150.01.04.007	Big Burner Cap	1
27	150.01.04.008	Medium Burner Cap	2
28	150.01.04.009	Small Burner Cap	1
29	150.10.02.035	Gas Connection Elbow	1
30	150.14.008	Gasket	1
31	150.10.02.009	Main Gas Pipe	1
32	150.08.003	3.9x13 Screw	4
33	150.08.009	4.2x32mm Screw	4
34	150.08.011	M3x12 Screw	12
35	150.08.026	M4x6 Screw	10
36	150.08.053	M4x18 Screw	10
37	150.14.001	EPDM Tape	1
38	151.01.02.020	Mounting Sheet	4
39	150.04.01.033	Cast Iron Pan Support Middle	1
40	150.04.01.031	Cast Iron Pan Support Right-Left	2
41	151.01.02.009	Injector Kit	1
42	151.01.02.066	Gas Tap Sheet	1
43	150.03.02.002	Button Plastic	5
44	150.05.019	Spring	5
45	150.14.006	Button Gasket	5
46	150.03.01.049	Button	5
47	151.01.01.383	Top Table	1
48	150.10.01.167	Gas Distribution Pipe	1
49	150.10.01.168	Gas Distribution Pipe	1
50	150.10.01.170	Gas Distribution Pipe	1
51	150.10.01.171	Gas Distribution Pipe	1
52	150.10.01.169	Gas Distribution Pipe	1



NOTES: -
 -Unless otherwise specified dimensions are in millimeters.
 -Do not scale drawing.
 -Unspecified tolerances are 0,2 mm.

 ELEKTRİKLİ CİHAZLAR A.Ş.	NAME	DATE
	DRAWN İSMAİL ÖZEN	
	CONTROL TAYYAR ÇOBAN	
	CONF. TAYYAR ÇOBAN	
	E-MAIL	
GROUND RAL:-	SERIGRAPHY RAL:-	

MATERIAL:	PART CODE:22 382 SW R DNG MNF	PART NAME:
DIMENSIONS:-	CUSTOMER CODE:EGHE.75.33CB.R/G	PRODUCT NAME:22 382 SW R DNG MNF
		REV:1 1:10